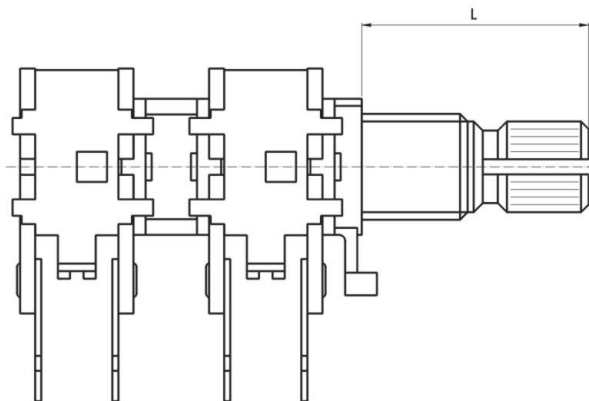


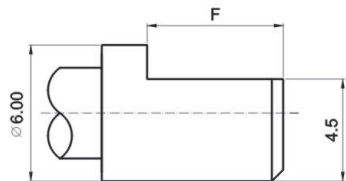
Type of shaft : 軸の型式

R1240G

R1260G

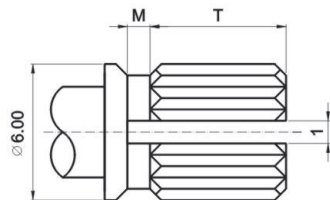


F TYPE



X	A	B	C		
L	15	20	25		
F	7	12	12		

KQ TYPE(18T)



X	1	2	3	4	5
L	12	15	20	25	30
T	3.5	6	8	12	12
M	0.5	1	2	4	4

**Mechanical characteristics: 機械的性能**

Total rotational angle 全迴轉角度	$300^{\circ} \pm 10^{\circ}$
Rotational torque 迴轉扭力	2~20mN.m (20~204gf.cm)
Rotation stopper strength 止迴轉強度	0.5 N.m (5kgf.cm)
Push pull strength 軸推拉強度	70N (7kgf) max.
Click torque C.C. 扭力	5~30mN.m (51~305gf.cm)

**Electrical characteristics: 電氣的性能**

Total resistance 總阻值	B:5K $\Omega$ ~1M $\Omega$ other than B:5K $\Omega$ ~500K $\Omega$ (B以外)
Total resistance tolerance 總阻值容許差	$\pm 20\%$ more than 1M $\Omega$ $\pm 30\%$
Rated power 定格電力	B:0.08W other than B:0.04W (B以外)
Max. operating voltage 最高使用電壓	B:150V AC other than B:100V AC (B以外)
Resistance taper 阻值線性	A,B,C
Residual resistance 殘留阻值	R $\geq$ 250K $\Omega$ 0.1% max. of total resistance 250K $\Omega$ > R > 10K $\Omega$ 20 $\Omega$ max. 10K $\Omega$ $\geq$ R    10 $\Omega$ max.
Insulation resistance 絕緣抵抗	more than 50M $\Omega$ at DC 500V
Gang error 相互偏差	-40~0 dB $\leq$ 3dB

**Durability: 耐久的性能**

Rotational life 迴轉壽命	15,000 cycles
-------------------------	---------------